

G 8

PELIKAN
Chorkreis

Musik Hug

Verlage

Herausgegeben von
Hansruedi Willisegger

Lötschberger Schlafliedli

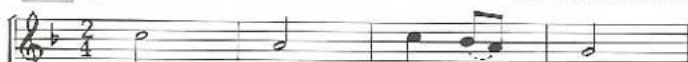
(Kippel/Wallis)

Satz:

HR. WILLISEGGER

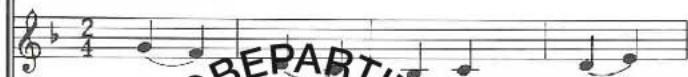
Lied: ♩ = 64 - 72

Sopran



1. Nun - nu, Chind - li, — schlaf!
 2. Nun - nu, Dru - se - li - bus!
 3. Nun - nu, chlef - nä Gitz!
 4. (summen)

Alt



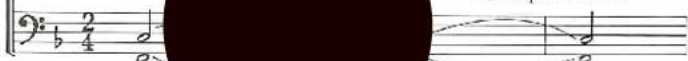
Na na (oder Text) 4. Strophe summen

Tenor



Na na 4. Strophe summen

Bass

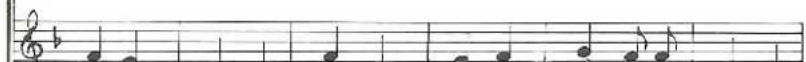


Na na 4. Strophe summen

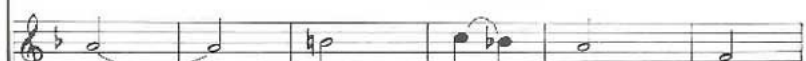
PROBEPARTITUR
kopieren verboten



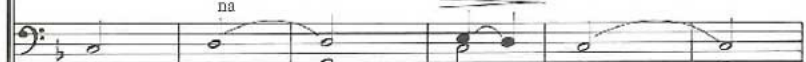
1. Uf der— Mat - tun wei - dun d'Schaf, d'schwar - zun und
 2. Chumm bid mir in d'Ha - sel - nuss, icht weiss än gan - zi
 3. Hör - zigs Chindli schlaf än Bitz! Nun - - nu,
 4. (summen)



na na na na na na na na na na



na na na na na na



na na na na na na

Druselbus = Kosename reitla = schaukeln d's Herrin Hundschin = des Pfarrers Hündchen